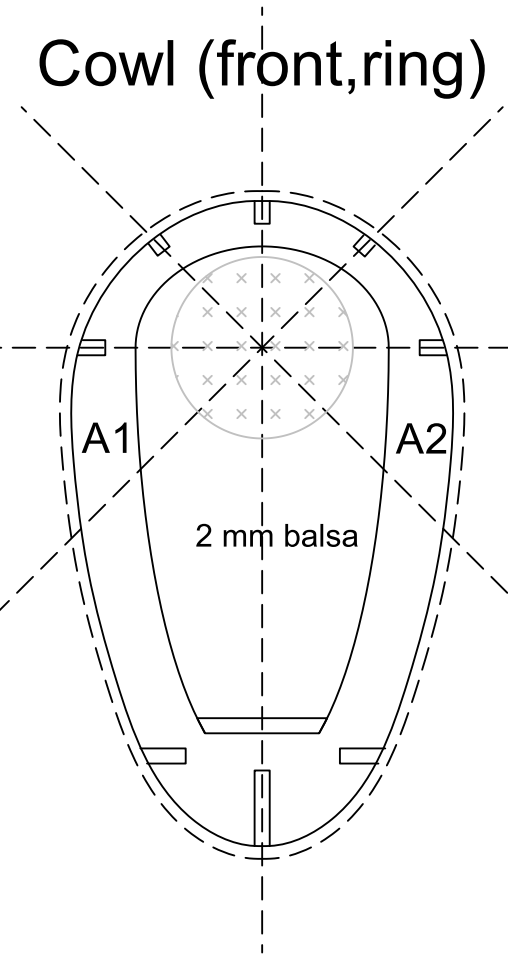
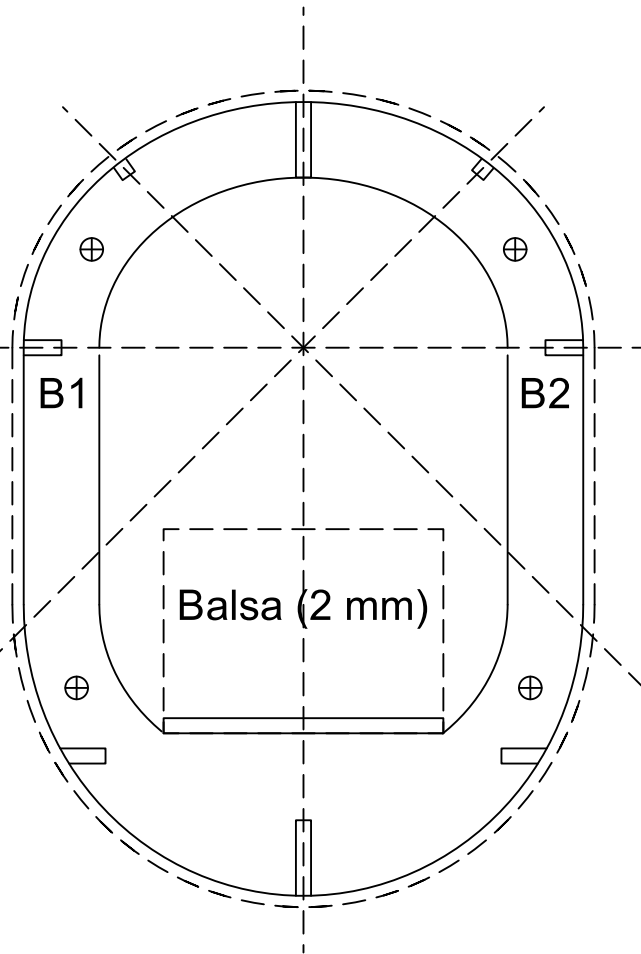


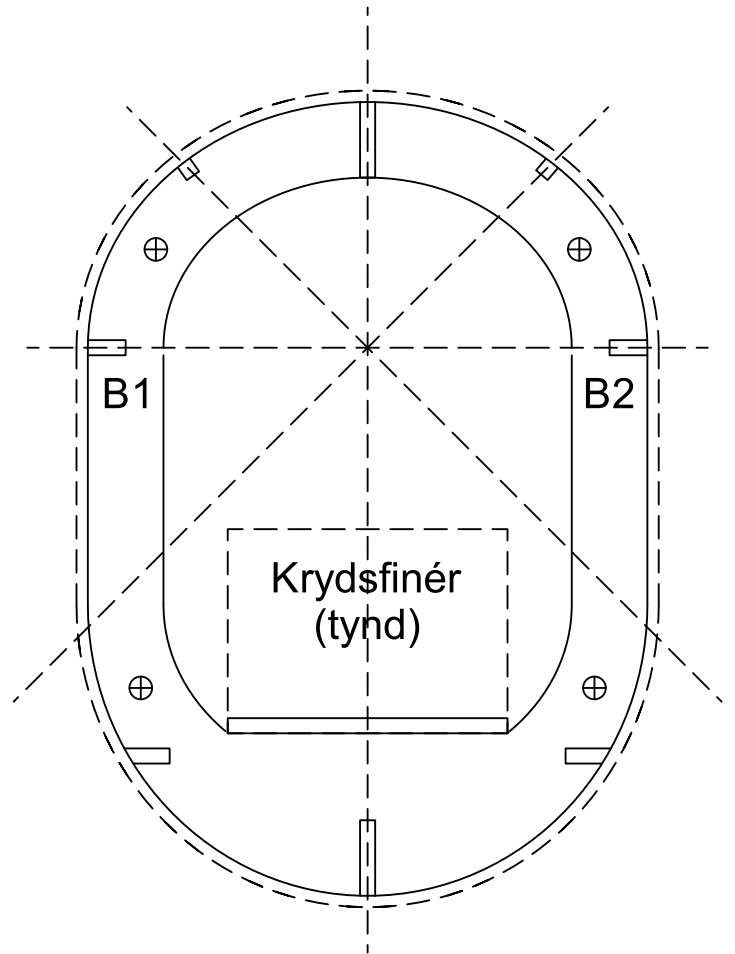
Cowl (front,ring)



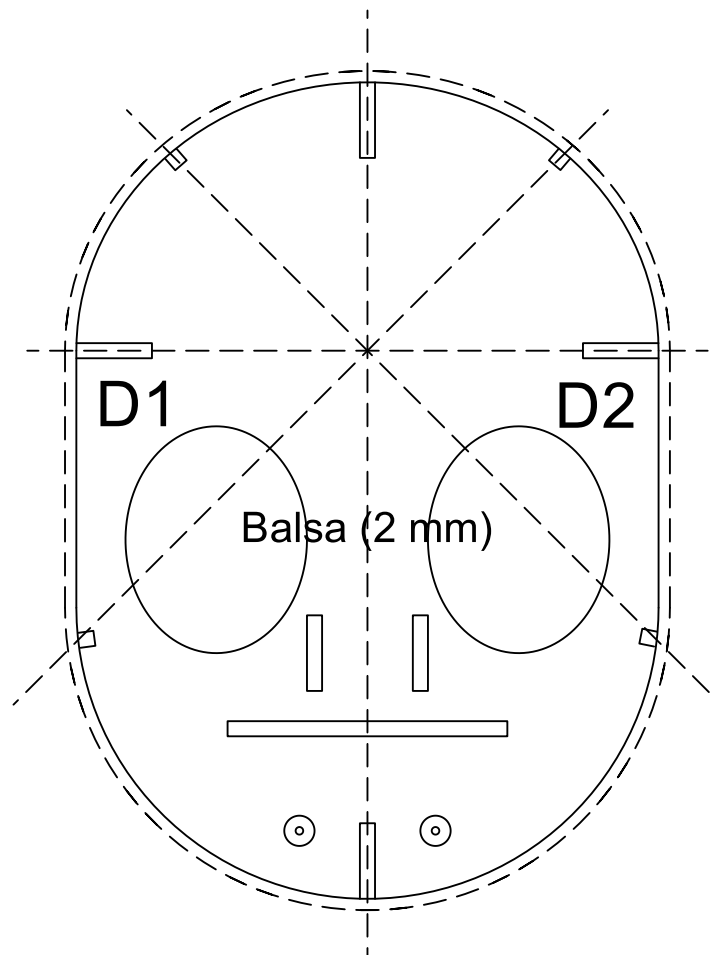
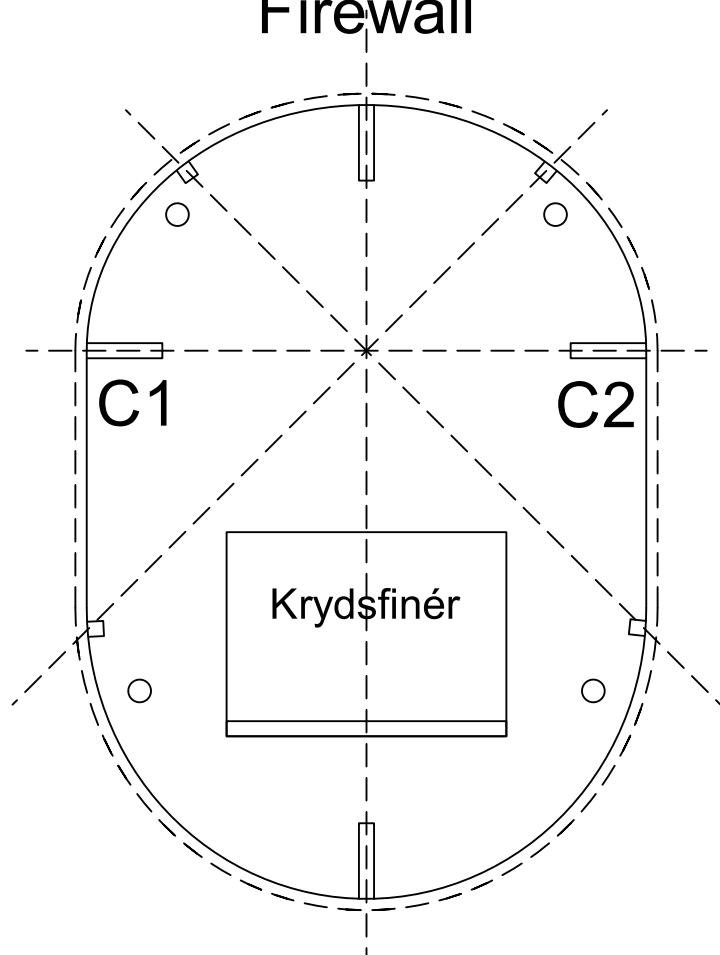
Cowl (bag,ring)

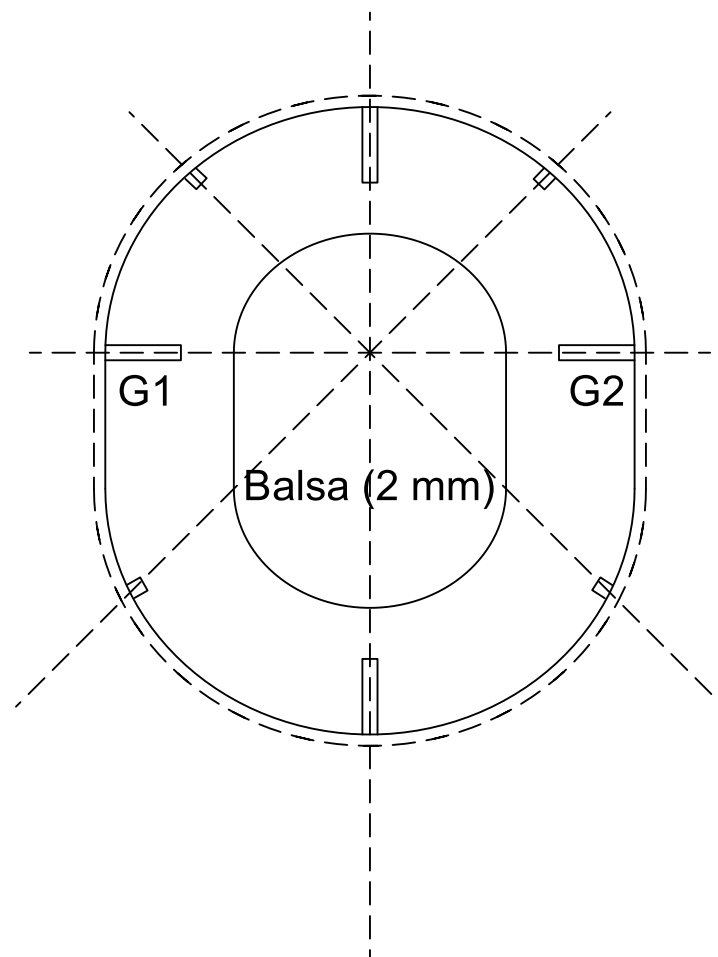
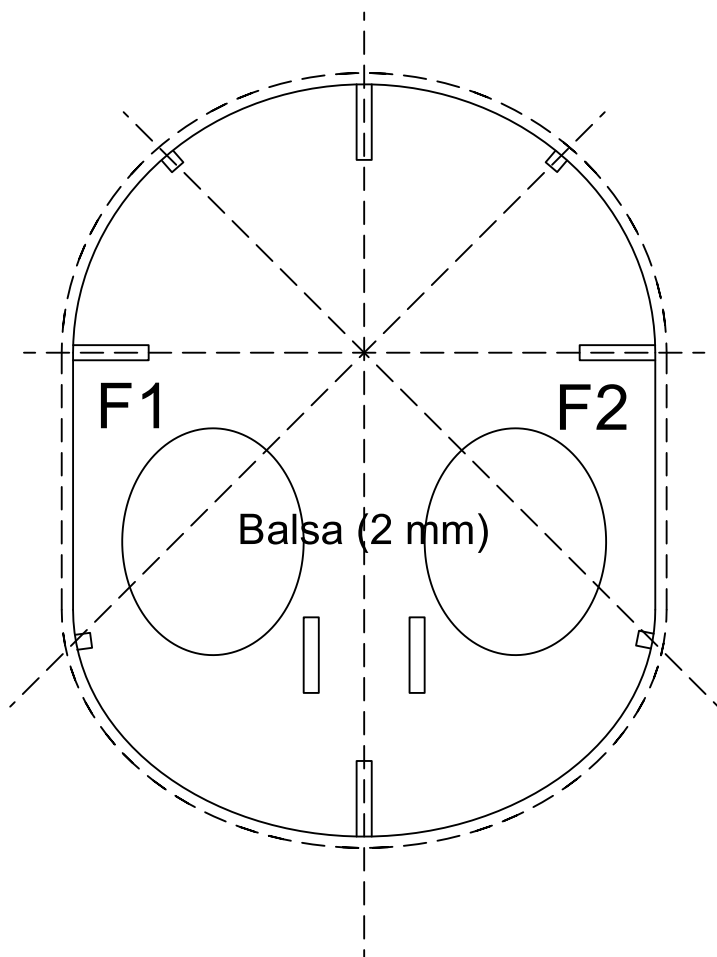


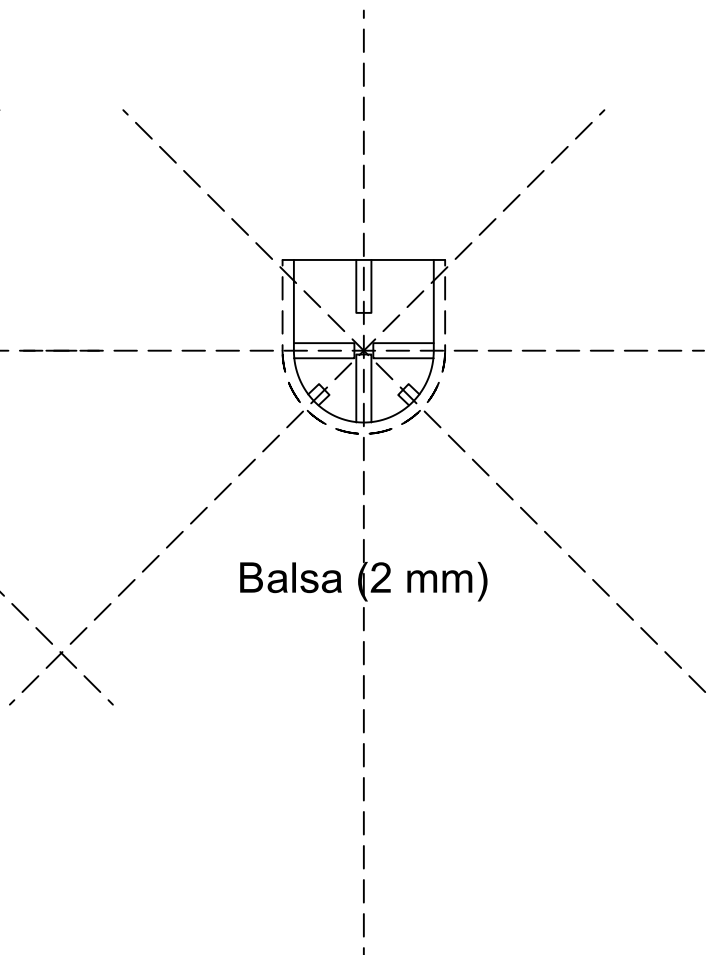
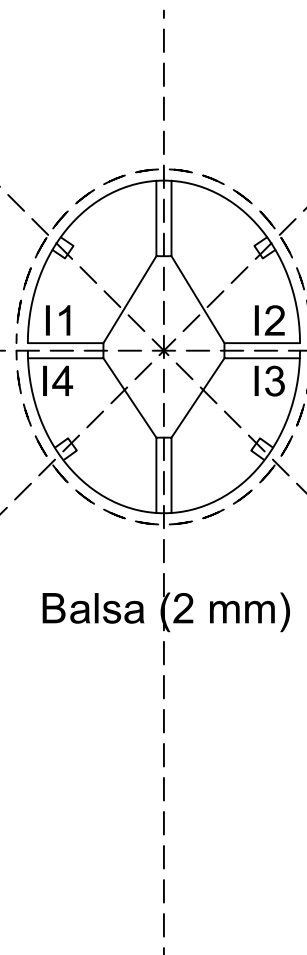
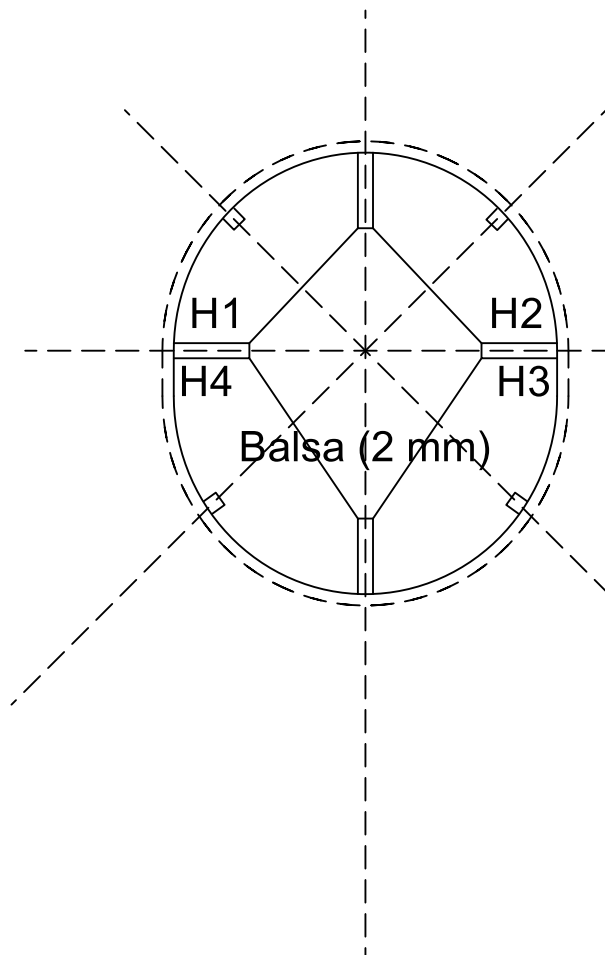
Cowl (bag,ring)

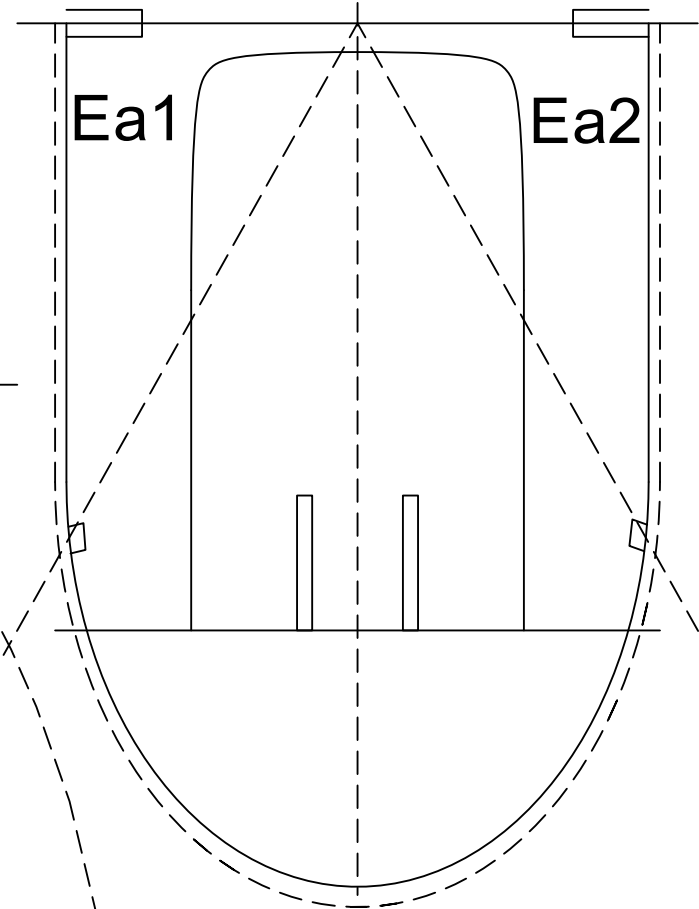
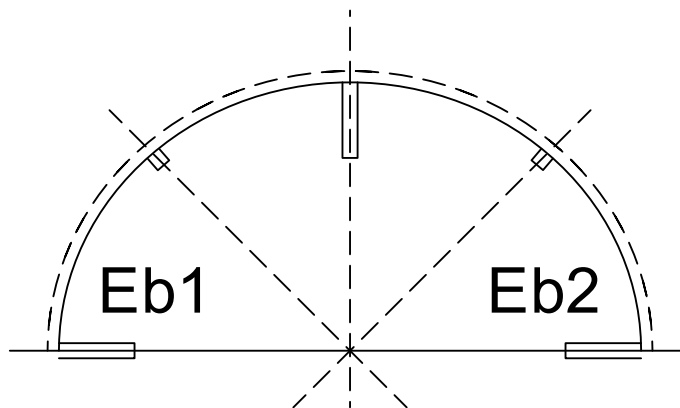
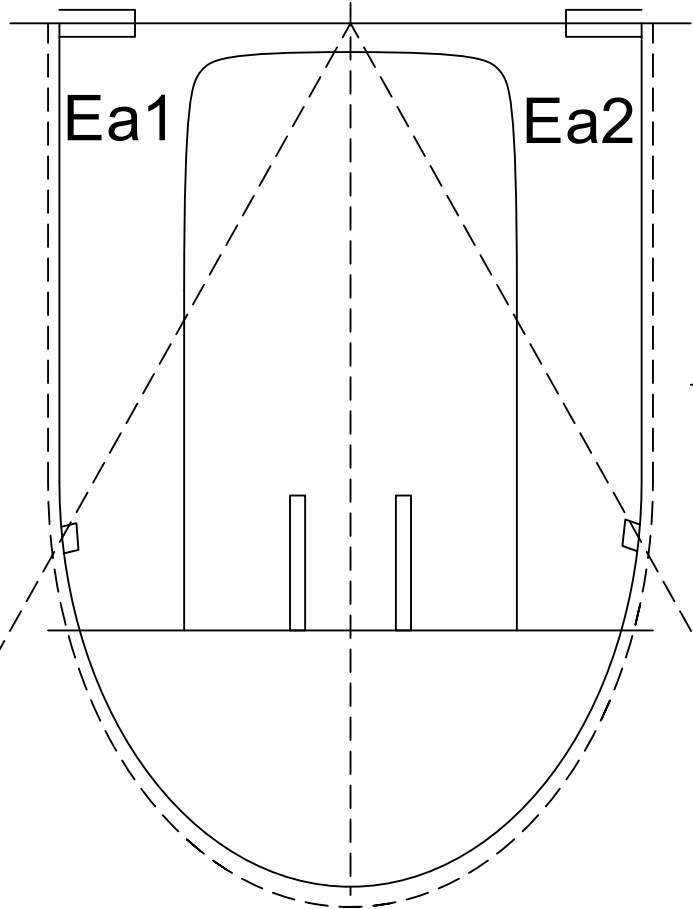
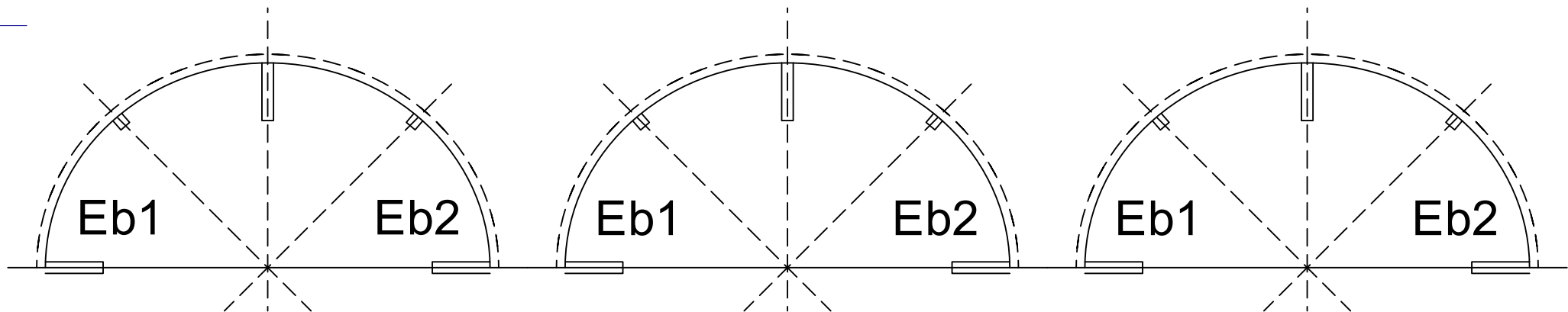


# Firewall

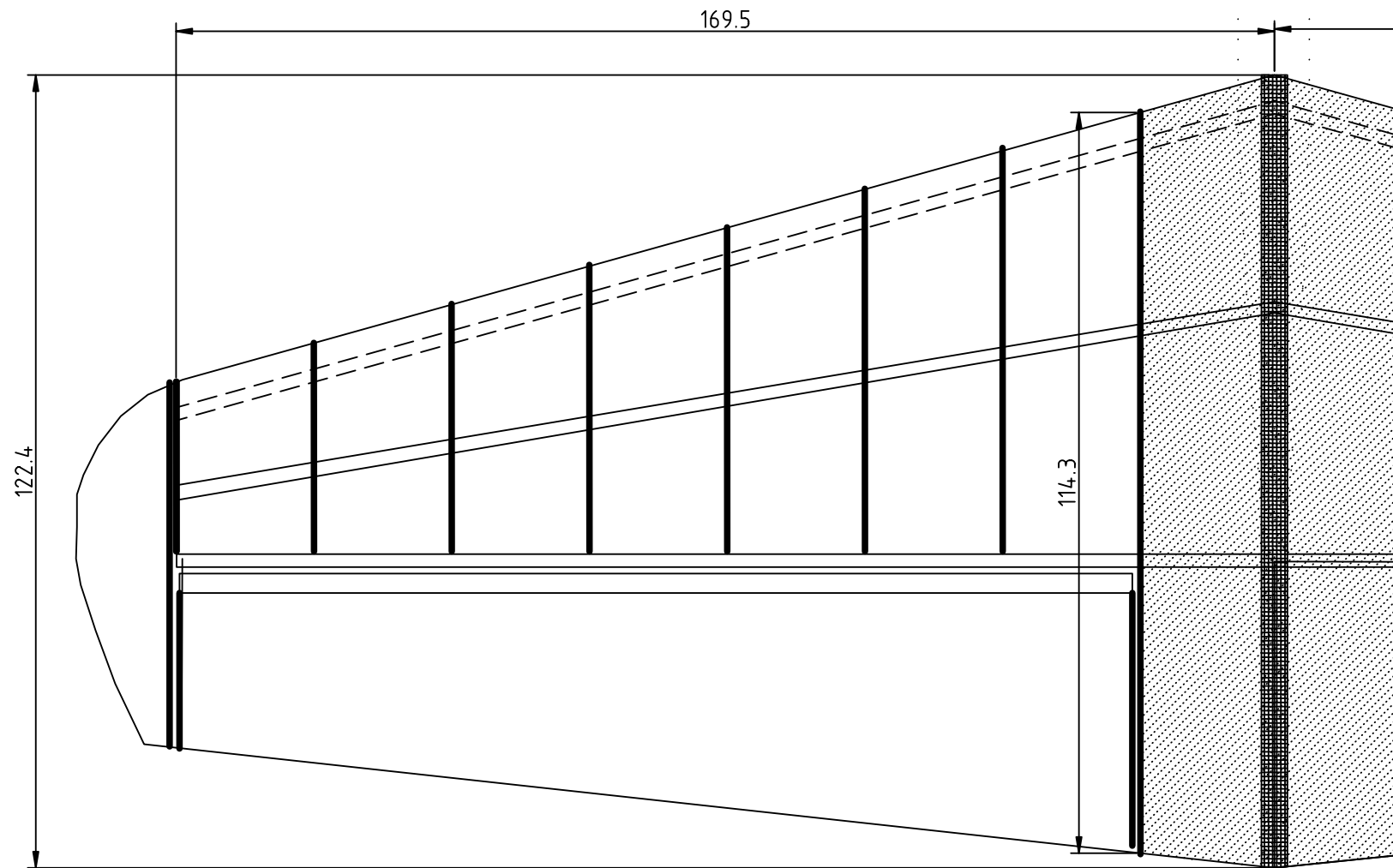




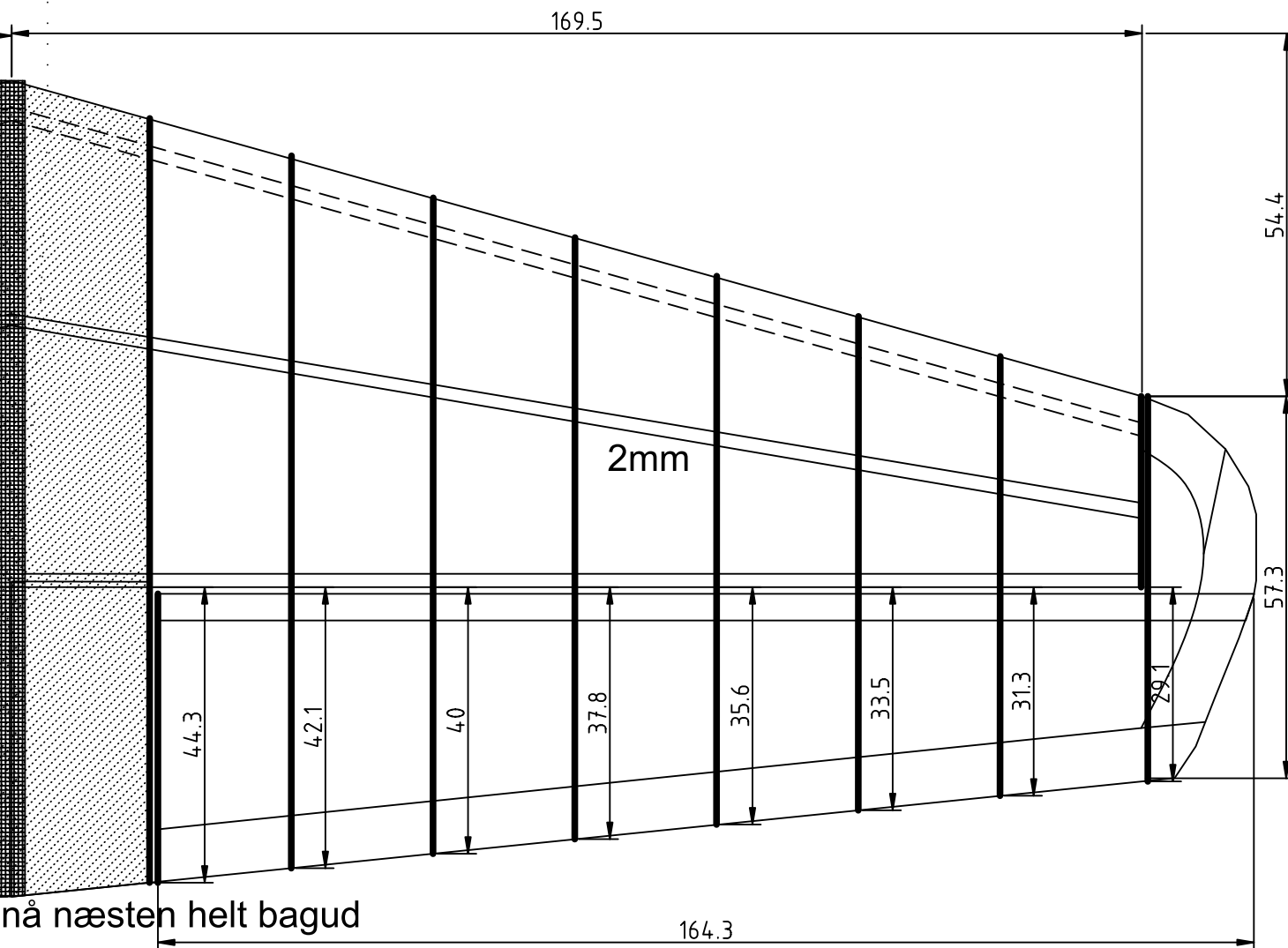


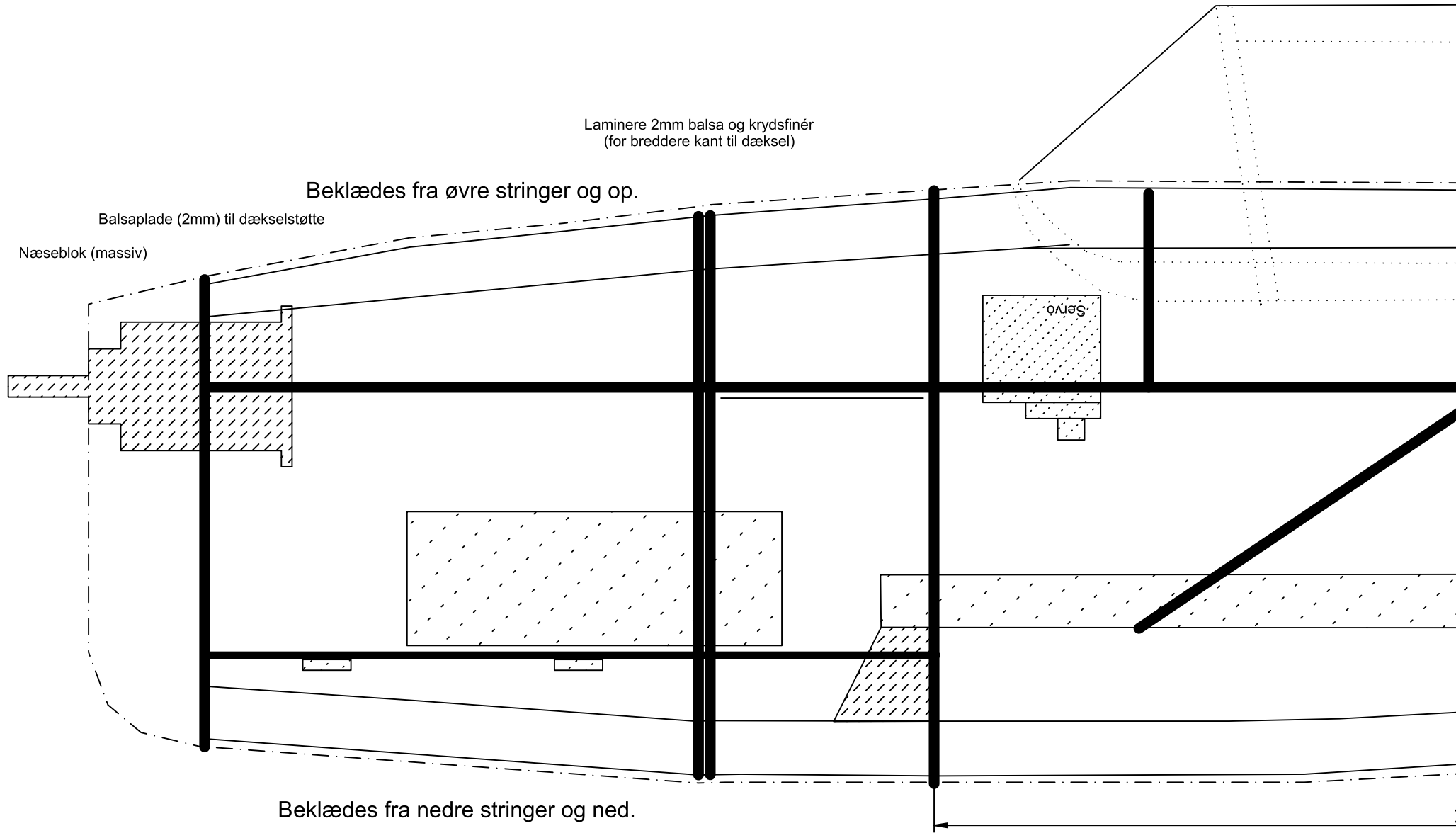


Begge sider bygges samtidigt



Spanter skal nå næst





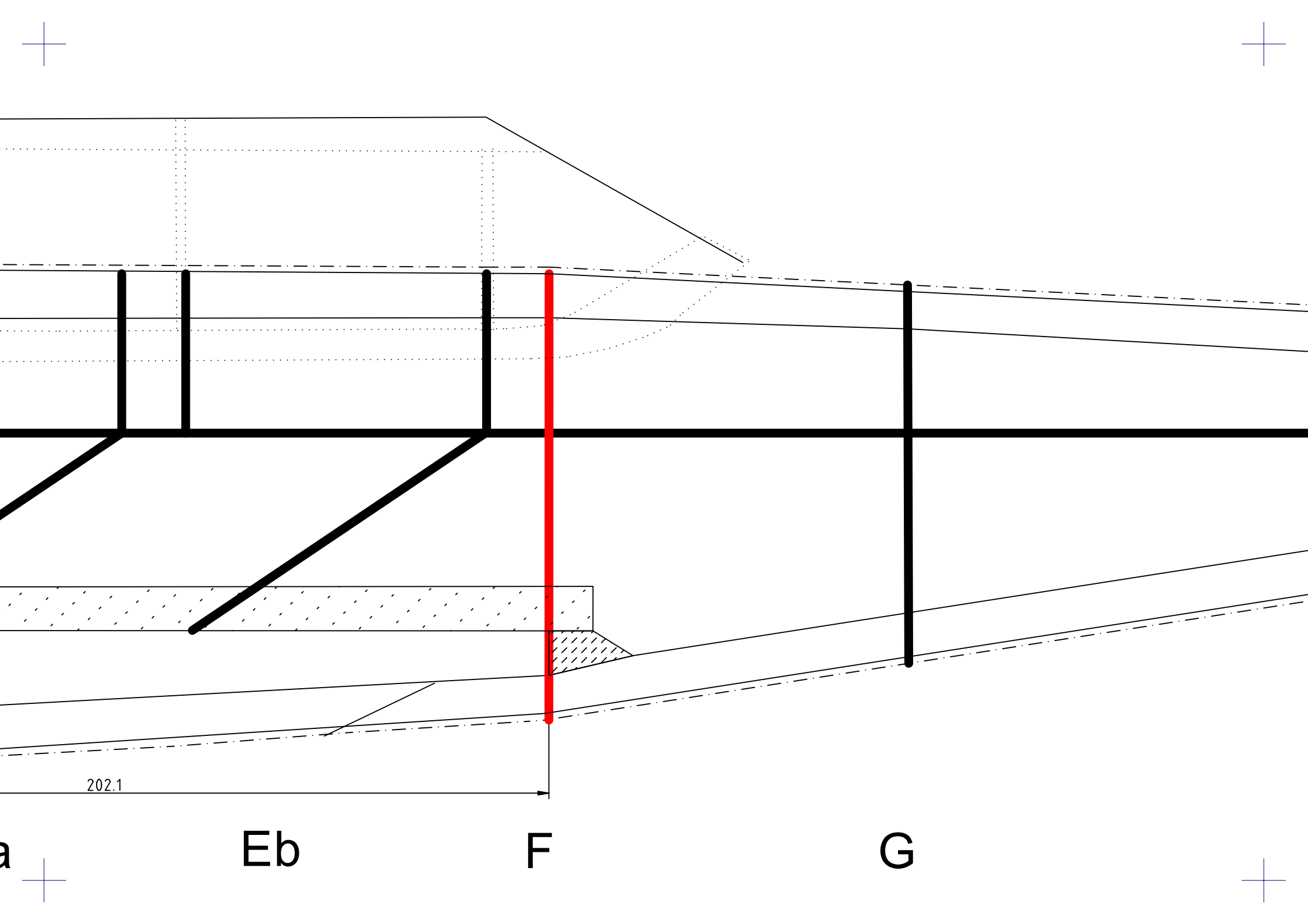
A

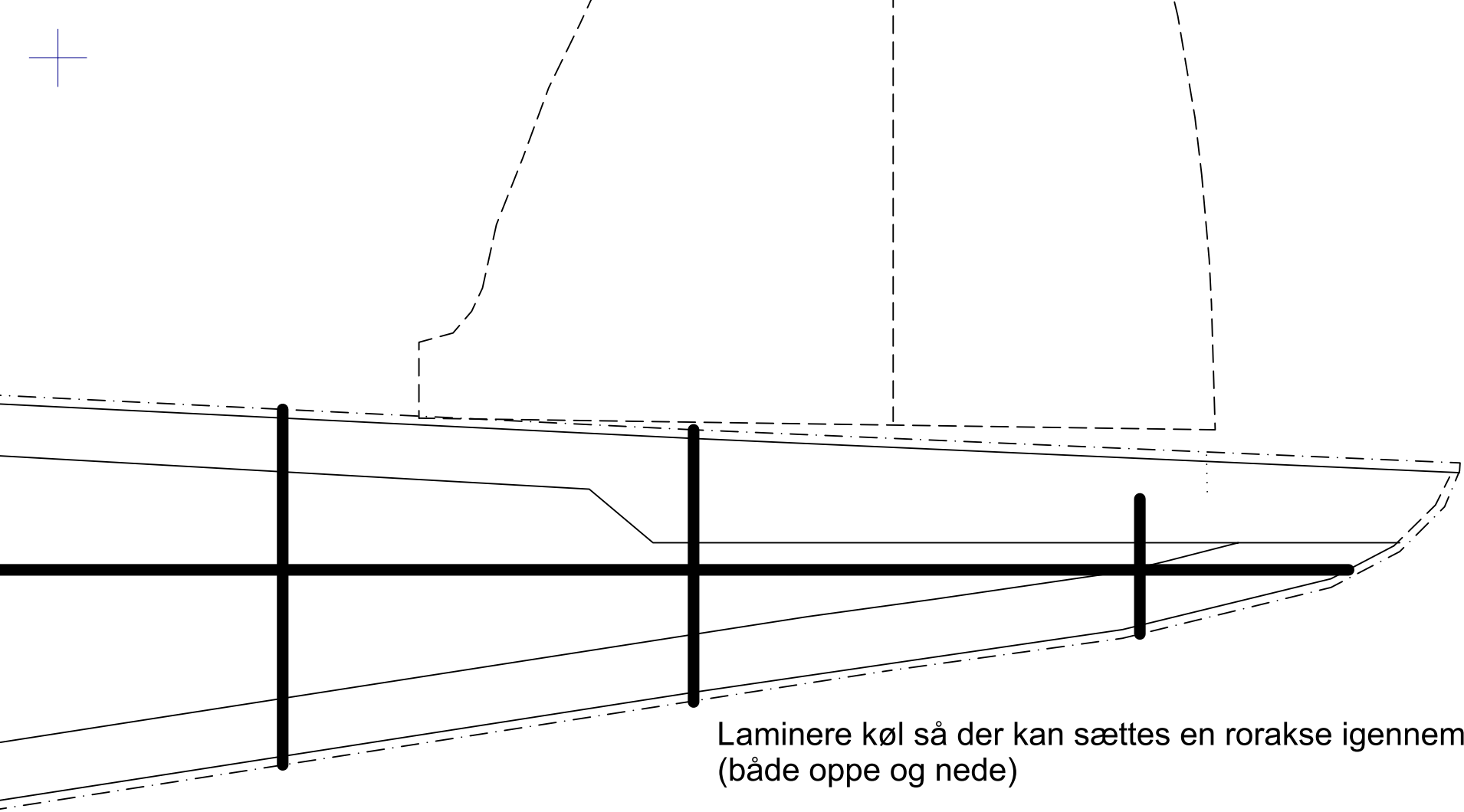
B C

D

Ea





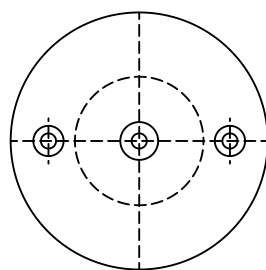
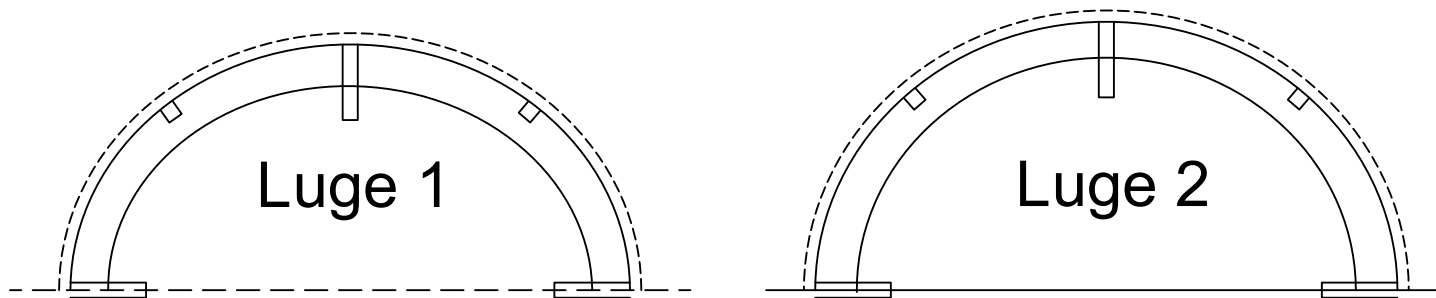


Laminere køl så der kan sættes en rorakse igennem  
(både oppe og nede)

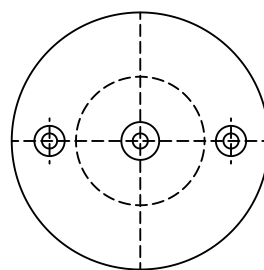
H

I

J

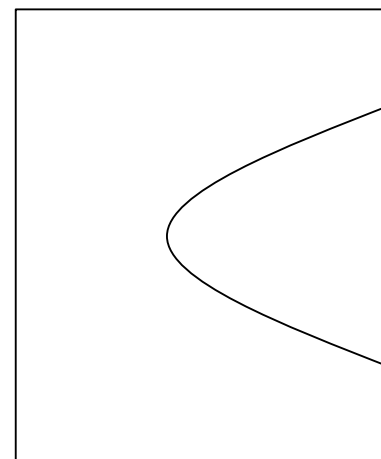


Til balsaklods

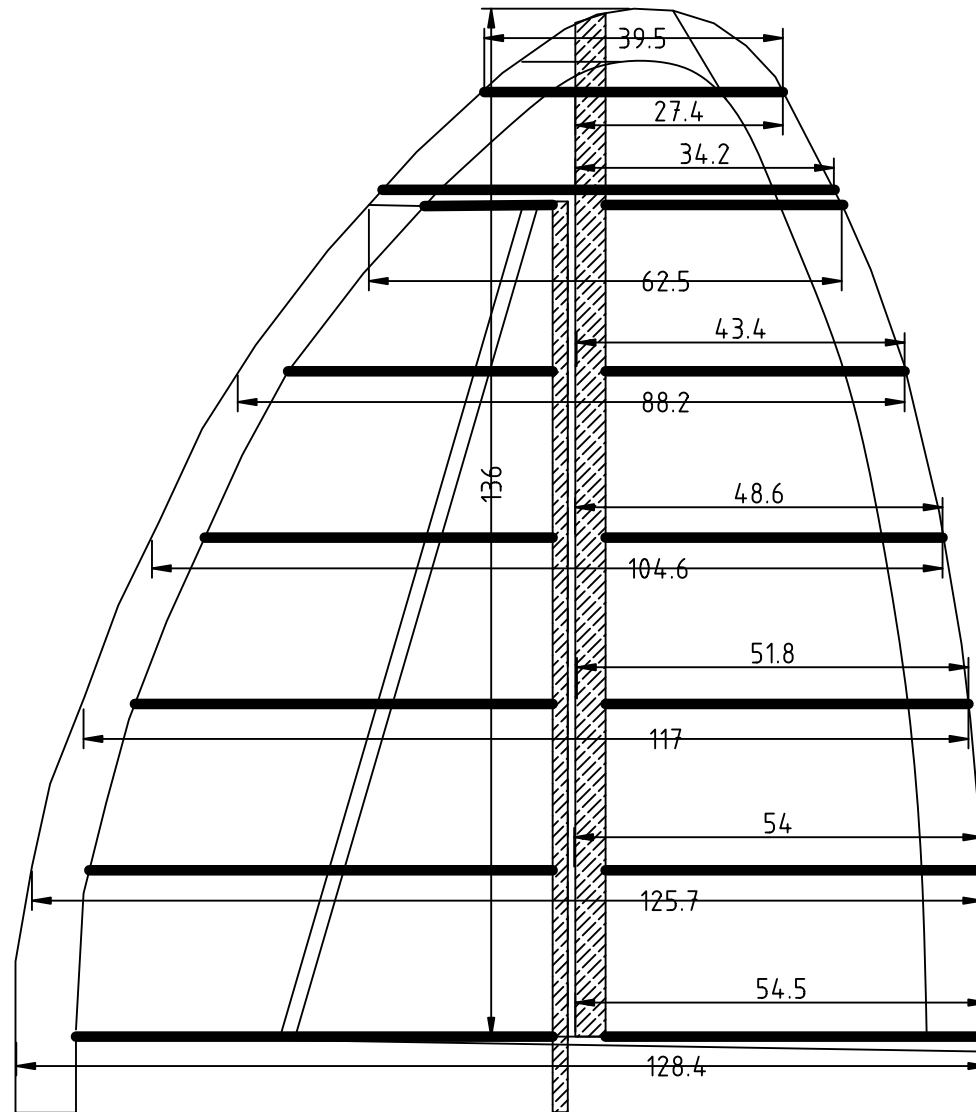


Til krydsfinérplade

Propelspinner-skabelon (bagplade)



Propelspinner-skabelon (side)

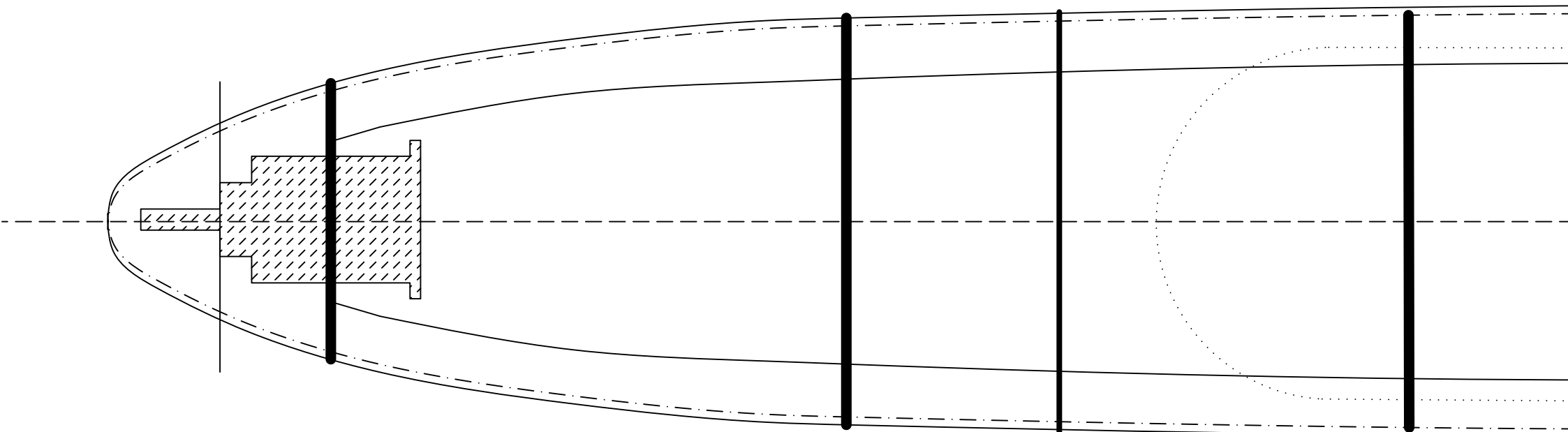


A

B C

D

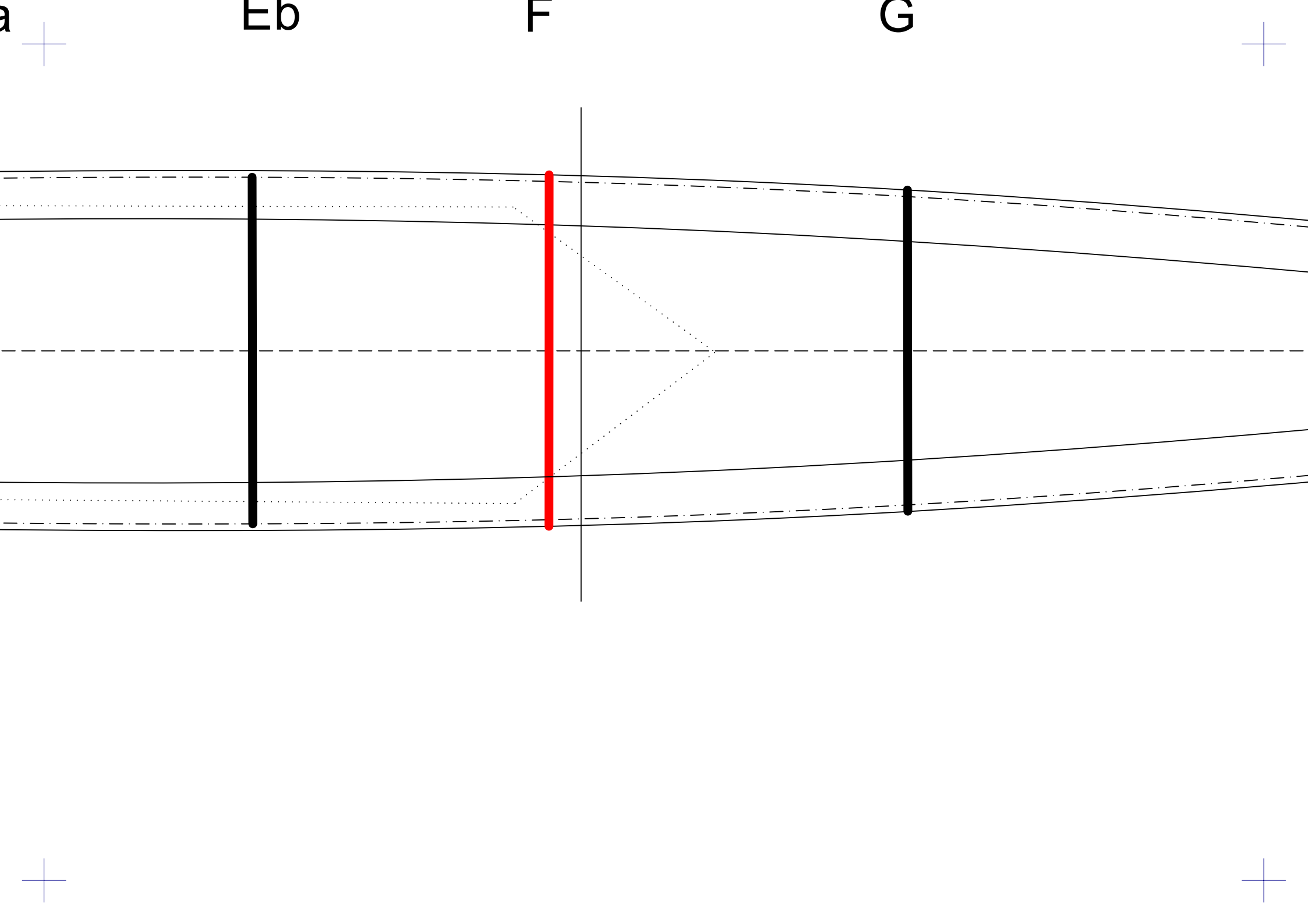
Ea



Chipmunk 1:10

(C) Jørn Wildt 2015 - [jw@elfisk.dk](mailto:jw@elfisk.dk)

Tegningen kan gengives i enhver form kvit og frit  
såfremt oprindeligt navn og copyright-meddelelse  
bibeholdes.





H

I

J

